



ISSUE TWO - AUGUST 2008

Shearwater on the Island - Construction Launch

Shearwater on the Island celebrated a major project milestone with a 'Construction Commencement' event held on Thursday 12 June. This event marked the beginning of construction for Stages 1, 2 and the 5 hectare Wetlands.

Attending guests included purchasers from Stages 1 & 2, Council members, key consultants, sales agents, sponsorship partners and local media.

Shearwater's very first purchasers, Phillip Island locals Kevin & Judy Donahoo joined Executive General Manager, Jason Smith in commemorating the first turning of the sod.

The event provided guests with an opportunity to meet with the Shearwater project team, share in the vision for the estate and receive further information about the progress made on site to date. Shearwater on the Island celebrated a major project milestone with a 'Construction Commencement' event held on Thursday 12 June. This event marked the beginning of construction for Stages 1, 2 and the 5 hectare Wetlands.

Attending guests included purchasers from Stages 1 & 2, Council members, key consultants, sales agents, sponsorship partners and local media.

Shearwater's very first purchasers, Phillip Island locals Kevin & Judy Donahoo joined Executive General Manager, Jason Smith in commemorating the first turning of the sod.

The event provided guests with an opportunity to meet with the Shearwater project team, share in the vision for the estate and receive further information about the progress made on site to date.



STAGE 3 COMING SOON! - Register Your Interest online now

First stage of construction - Shearwater Wetlands



Civil construction works has begun with the excavation of the Shearwater Wetlands, which is a key feature of the estate.

The Shearwater Wetlands has been designed to attract local Phillip Island wildlife with the planting of native species throughout. Once complete the Wetlands will divert stormwater from the site through a series of channels, which cleanse and filter pollutants before entering into Westernport Bay.

Being a central element to the Shearwater lifestyle, the Wetlands will provide residents with areas to relax and reflect. Boardwalks, platforms and benches will be integrated into the design to encourage residents to interact with nature and enjoy their surroundings.

New look website - Coming Soon!

The Shearwater website will be getting a fresh new look in the coming months. Providing you with information about the Estate, new site images, maps, news and information on events. The website is also a quick and easy way for you to contact us with any questions you may have.



Design Elements

Look out for the new 'Design Elements' section in the next edition of the ShearLiving newsletter. This section explains the styles and set out controls to ensure that the design of your home takes advantage of the distinctive character of Shearwater on the Island.

Civil Construction contractor - AKRON

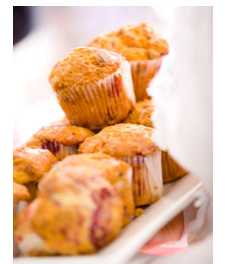
AKRON has been appointed as the civil construction contractor for Shearwater on the Island. AKRON is a privately owned company and has proudly been excelling in Civil Construction activities since 1969. Today, AKRON is one of the most versatile civil design and construction contractors in the Australian marketplace. AKRON's vision has always been to successfully deliver world class civil construction and engineering services to a broad variety of Government and private sector clients.

Phillip Island in focus: Local Cafe

The Island Food Store in Cowes, did a fantastic job of catering the Shearwater Construction Commencement event. As a proud supporter of local businesses, Shearwater on the Island is happy to feature them in this edition of ShearLiving.

Some of the products and ready to eat foods you will find at the Island Food Store include

- Home baked pies & pasties
- Tarts, cakes & muffins
- Variety of gourmet salads
- Local olive oils
- Grinders Coffee
- Phillipa's breads



Visit the cafe at: 75 Chapel Street, Cowes, Phillip Island



For more information call 1300 SHEARWATER

Developed by

